

May 2022 Fountain Street Annex

David Covert, Patricia Crotty, and Robert Sullivan

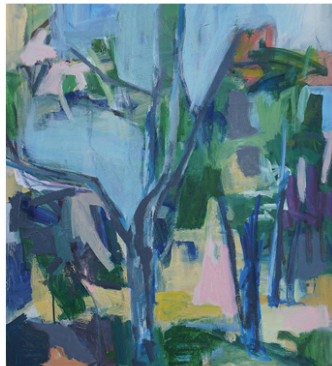
May 4 – May 29, 2022

SoWa First Friday Art Walk: Friday, May 6, 2022 | 5:00 – 8:00PM

Gallery Hours: Thursday – Sunday, 12-4pm.

FOR PRESS-READY IMAGES CONTACT: Marie Craig at fountainstfineart@gmail.com, (774) 286-1800

Boston, MA– A focus on capturing divergent forces takes over the Annex in May. Robert Sullivan highlights the shifting and changing meaning inherent in his work. Patricia Crotty's work hovers between representation and abstraction. David Covert records a world of invisible forces and visible constraints



David Covert

David Covert has been involved in art making for more than fifty years, continuing to look, draw, paint, and occasionally sculpt. His formal training has been instruction at the Student Art Association at MIT, classes at the Museum School of the MFA, Mass College of Art, and the DeCordova Museum school and local printmaking workshops. The work has been shown in juried competitions and small group shows at the Arts League of Lowell and at the Cambridge and Concord Art Associations. The work is in private collections and in the collection of the Cambridge Trust Company. His studio is in Arlington, MA.

Patricia Crotty

Patricia Crotty earned an MFA and DEA (post-master's degree) in painting and multi-media at the Sorbonne in Paris. Living in Paris and travelling in Europe to draw and paint en plein air had a lasting impact on her work. Her photography and video works also influence her studio practice. Crotty has participated in group and solo shows in New England and the Boston area, New York, Paris, and Amsterdam. Her work is in collections in the U.S. and Europe. She lives and works in Arlington, MA.

[FOUNTAIN STREET]

FOR IMMEDIATE RELEASE

Robert Sullivan

Robert Sullivan received his BFA from the School of Visual Arts in NYC, where he majored in both Painting and Illustration. He earned his MFA from Lesley Art+Design in Cambridge, with a concentration in Critical Theory and Studio Art. He has taught studio art for nearly two decades in undergraduate programs, and is now a lecturer at LA+D in Integrated Studies, specializing in seminar courses related to visual culture. His work can primarily be seen in the New York City and Boston areas, where he has had numerous solo and group shows. Collections range from this same region, but are also as far-flung as Ireland, Italy, and New Zealand. Sullivan lives and works in Portland, Maine and Cambridge, Massachusetts.

Image Information

[L] Covert, *Pier*

[C] Crotty, *Birch Trees*

[R] Sullivan, *Rosea Sonitus*

About Fountain Street

Fountain Street is a contemporary gallery in the SoWa Art + Design District of Boston. We exhibit a wide array of media from over 30 emerging and mid-career artists in both our main and annex galleries. Founded in 2011, our passion has always been about connecting art seekers and makers through thoughtfully curated exhibitions, juried shows, collaborative projects and installations. In its third year, the Annex is a section of the gallery where work is featured by artists seeking gallery experience and exposure in the Boston area. Our deep commitment to local artists and frequent rotation of new exhibits offers visitors a fresh and dynamic art experience.

Contact

Marie Craig, Director, (774) 286-1800, marie@fsfaboston.com
Fountain Street Gallery, 460c Harrison Ave. #2, Boston, MA 02118
www.fsfaboston.com