

Seeking Care

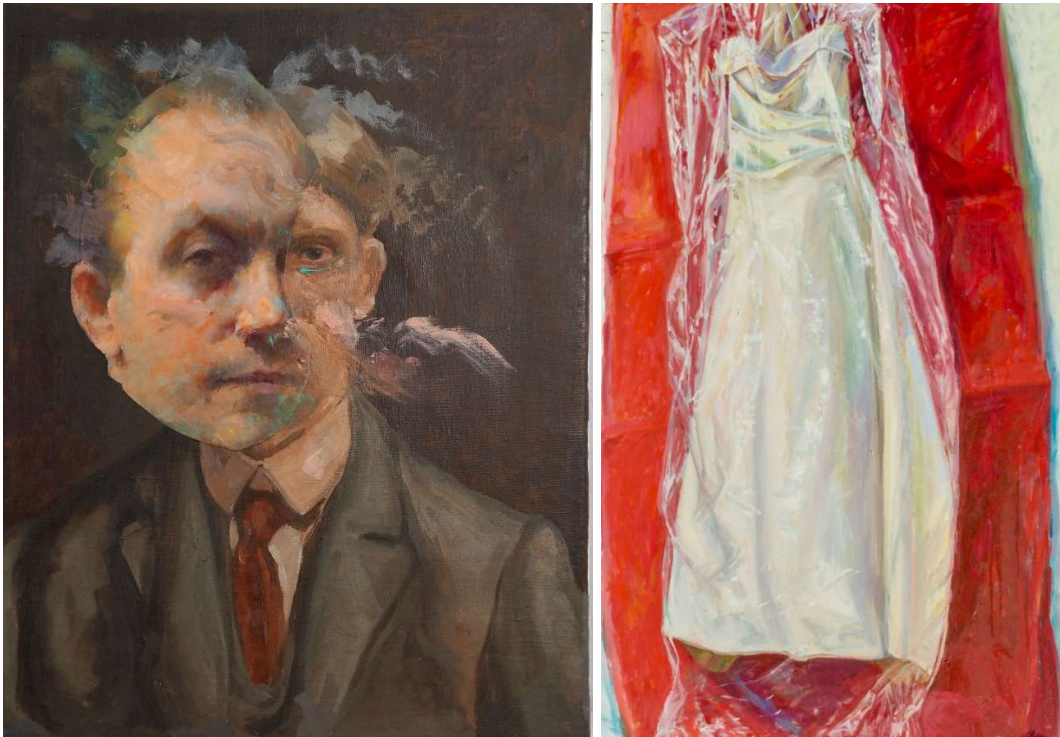
Online Associate Member Group Show

Curated by Daniel Zeese + Georgina Lewis

August 5–30, 2020

www.fsfaboston.com/seeking-care

FOR PRESS-READY IMAGES CONTACT: Marie Craig at director@fsfaboston.com, (774) 286-1800



BOSTON, MA – Beginning August 5th, Fountain Street will open the online exhibit “Seeking Care,” featuring the work of the Gallery’s Associate Members. At different scales, we are at once turning inwardly to ourselves and outwardly to the world around us to seek care. We see it in our mental health, the health of our community, and the health of our planet. A meditation on an everyday object or space functions as a prompt. Care may also radiate outwards from an object—the gesture of conferring solace on the viewer as on the creator. Similarly, even the practice of making creates a space for our own self-care, often with a rippled effect outside of our control. This exhibition will provide a way for viewers to pause and reflect upon the work of our Associate Members as they guide us through their respective lenses of where and how they seek care.

Exhibiting Artists

John Baker, Katherine Borkowski-Byrne, Linda DeStefano Brown, Brenda Cirioni, John Daly, Susan Greer Emerson, Nan Hass Feldman, Catherine Gibbs, Pat Paxson, Shany Porras, and Jill Pottle.

Curators

Daniel Zeese is an artist, educator and designer working in Boston and Johnson, Vermont. Zeese has a Master's in Architecture from Boston Architectural College and a BFA in sculpture from Virginia Commonwealth University. He has shown throughout Massachusetts and New York, and most recently exhibited a solo show at Vermont Studio Center and a show with frequent collaborator Mia Cross at Fountain Street Gallery. Zeese is a Core Member at Fountain Street.

Georgina Lewis received her MFA in Sound from Bard College and holds undergraduate degrees from the School of the Museum of Fine Arts at Tufts and Franklin and Marshall College. She has been a resident at Millay Colony, Virginia Center for the Creative Arts and VCCA France, as well as a fellow at Harvard University's metaLAB. She is one of the studio artists at the Boston Center for the Arts and a former member of the Boston-based new technologies group Collision Collective. Her work has been presented at numerous venues including the Visual Studies Workshop, National University of Ireland, REDCAT in Los Angeles, Boston Cyberarts Gallery, Mills Gallery, and Boston University's 808 Gallery. Lewis is a Core Member at Fountain Street.

Image Information

Left: John Baker, *Eclipse Mask*, acrylic on canvas with collage

Right: Jill Pottle, *Pandemic Wedding*, oil on canvas

About Fountain Street

Fountain Street is a contemporary gallery in the SoWa Art + Design District of Boston. We exhibit a wide array of media from over 30 emerging and mid-career artists in both our main and annex galleries. Founded in 2011, our passion has always been about connecting art seekers and makers through thoughtfully curated exhibitions, juried shows, collaborative projects and installations. Our deep commitment to local artists and frequent rotation of new exhibits offers visitors a fresh and dynamic art experience.

Contact

Marie Craig, Director, (774) 286-1800

Fountain Street Gallery, 460C Harrison Ave. #2, Boston, MA 02118

marie@fsfaboston.com

www.fsfaboston.com